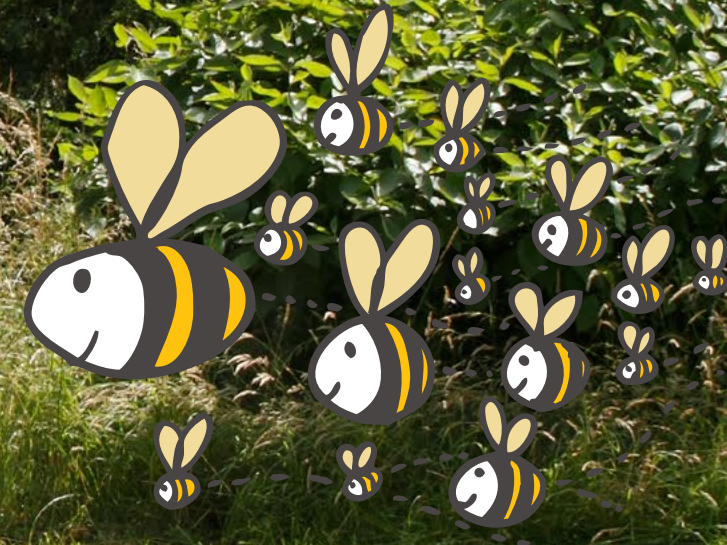


# Parklife

**HOWBERY BEES THRIVING -  
HONEY SOON?**



**September 2016**

Howbery Business Park - Wallingford

PEDALO CHALLENGE SUPPORT

**REGENERATION AT HOWBERY**

GO BUGGY GO!

**AND MORE...**



SEPTEMBER 2016

# Parklife

3 Can you help  
Style Acre? »

4 Trunk call -  
more recycling  
for Howbery »

10 The Bees are  
thriving - honey  
next? »

13 Howbery  
Regeneration »

6 Pedalo  
Challenge »



9 Go buggy Go! »



**In this issue:** 3 Can you help Style Acre? 4 Trunk Call - innovative recycling 5 HPSSA upcoming events 6 Pedalo Challenge 7 The Perfect Planter / Hanging out at Howbery 8 Restaurant theme dishes and dates 9 Go buggy Go! / New Tenants 10/11 The Bees are thriving 12 Seriously Scootering / Crowmarsh Football Team tournament winners 12 Seriously Scootering 13/14 Regeneration at Howbery 15 News from HR Wallingford 16 Meeting/Conference Room hire 17 Style Acre Event News





# Can you give an hour of your time to Howbery based charity?



**Style Acre supports over 200 people with learning disabilities in creative and dynamic ways.**

We are in need of an IT volunteer who can help our IT Manager at our Howbery Park office, for an hour or two per week. We are looking for someone who can with updating software, as well as other IT needs.

Your help as a volunteer will enable us to deliver more from our technology, which plays a crucial role in the lives of the people we support.

We additionally have volunteer opportunities at our successful tearoom in Blewbury. A social enterprise, it provides work experience for people we support, building confidence and skills. We rely on a wonderful team of volunteers who serve



customers, prepare food and much more.

If you or someone you know might be interested in becoming a volunteer for Style Acre, please Chris, our Volunteer Engagement Officer at [cburrows@styleacre.org.uk](mailto:cburrows@styleacre.org.uk) / 01491 827593

**For details of other Style Acre events please see page 17**







# Trunk call

About a year or so ago a large oak tree met it's end and fell to the ground at our Gate Hampton site in Oxfordshire. After the clear up by an Environment Agency Ops field team we were left with the tree trunk which was transported to their Osney Depot.

Andrew Timms based at the Osney Depot recently sharpened his tools and set about the timber and brought it back life by exposing the 100 or more years of growth and the inner grain. I'm sure when you see it you won't be able to resist snatching five minutes to sit and admire the beauty of the bench.







# HPSSA Upcoming Events

## The Tempest

Corn Exchange, Wallingford

19-22 October

The HPSSA is offering the following event: The Tempest at Wallingford Corn Exchange in October.

The Sinodun Players will be toasting the Bard's 400th anniversary year with an innovative and magical production of The Tempest, Shakespeare's play of enchantment, love, magic and political intrigue has been given a radical overhaul that promises to enhance the supernatural quality of his final and, arguably, greatest masterpiece.

Set on a mythical island where live a coterie of fascinating characters, this tale has long been hailed as Shakespeare's most captivating. The story revolves around the exiled Prospero, the Duke of Milan, who plots revenge on his usurping brother by conjuring up a storm to lure him to his destiny.

Performances take place October 19-22 at the Corn Exchange, Market Place, Wallingford, OX10 0EG at 7.45pm. Tickets £10 from [www.cornexchange.org.uk](http://www.cornexchange.org.uk) or box office 01491 825000.

As usual the HPSSA will offer a subsidy if there is the minimum of 8 participants. Book own tickets, and if the event qualifies for the sub then the ticket stub/receipt must be presented to the Treasurer.

Check out the new HPSSA website for more details: [www.hpssa.org.uk](http://www.hpssa.org.uk)





# Pedalo Thames Challenge

Howbery Business Park are proud sponsors of the four-man team attempting to set a world record by becoming the fastest team to travel the length of the navigable part of the River Thames - by pedalo - 123 miles!

Using the Thames near Wallingford as part of their practice regime, they dropped into the Park for a photo opportunity with Donna and Mark.

The team from RAF Benson comprise Corporal Steve Roberts, Corporal Wayne Brinkley, Senior Aircraftman Tom Setter and Senior Aircraftman Dave Canavan, aim to set sail on September 26th from Lechlade and arrive by October 1 at Teddington.

They are aiming to raise money for the RAF Benevolent Fund.

Comments Steve: "To achieve the record we will have to strict guidelines set out by Guinness World Records and will have to pedalo for more than 12 hours each day. The team has worked tirelessly over the last few months to get everything in place and we still have an enormous amount to do."

So far the team has raised more than £3,000 for the RAF Benevolent Fund, which supports RAF personnel and their families.

The men hope to raise £20,000. To make a donation, visit <http://thamespedalochallenge.co.uk>





# The Perfect Planter



**We found this old cart in one of HR Wallingford's modelling halls and think it dates back to the mid 50's.**

Originally used to transport timber from the timber store, where Kestrel is now located, to the workshop which is where the gym is now.

We thought it would be ideal to place it by the Stables and Cottage and plant it with seasonal flowers. Just another example of re-cycling on the park.

# Hanging out at Howbery

**On Monday 20th June our grounds company held a hanging basket workshop in the Manor House. Fun was had by all and they were delighted to learn how to plant a hanging basket and take it home and watch it flourish.**







# News and Events from The Manor House Catering Team

Come and join us for our themed menu days where we do our best to provide a little something different for your taste buds:-

**12th October  
Spanish Day**

**30th  
November**  
St Andrew's Day



**7th & 14th  
December  
Christmas  
Lunches from  
the Servery**

**8th & 15th  
December  
Christmas  
Lunches in the  
Function Rooms**



**So why not make a date to join  
us on these days?**



# Go Buggy Go!



**The Howbery Business Park buggy has had a bit of a makeover.**

Often seen buzzing around the park, the battery-powered golf buggy now sports the Howbery Business Park and Manor House Cafe Restaurant logos. The only thing missing now is a nice chauffeurs uniform for management staff member Mark Baxter as he pilots his 'baby' around.



## Welcome new tenants

**Howbery Business Park welcome the following new Tenants:**

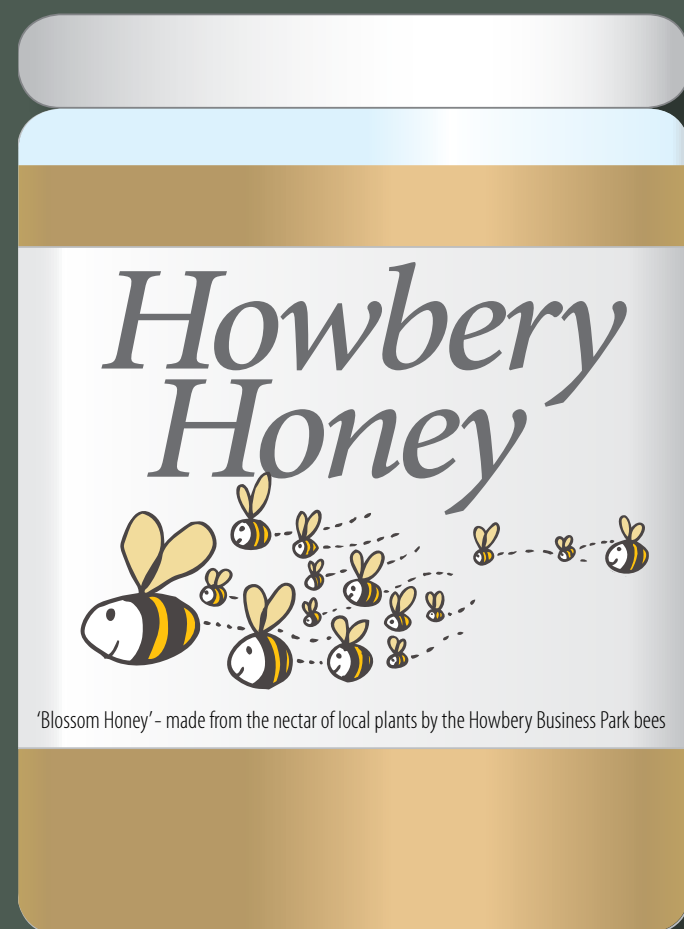
**KKDC Design House**

**Miramar Communications Ltd**



# The hives are thriving!

Plan B - to establish a healthy and thriving bee community at Howbery Business Park is really taking off. The two hives are populating well and we're even looking forward to the prospect of our first honey harvest in the near future.



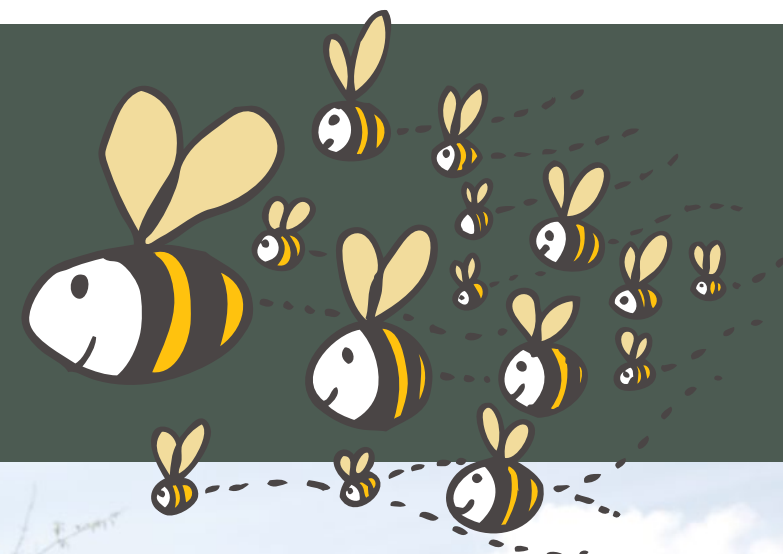
The park honey may offer relief to hay fever sufferers. The introduction of the hives on the Park could bring relief to local hay fever sufferers.

Anecdotal evidence suggests eating honey from local bees can acclimatise the body and prevent it reacting to airborne pollen spores thereby reducing the symptoms of hay fever. Keen to ensure working at Howbery Business Park is a pleasurable experience, park bosses have agreed to make the honey available on an as needed basis for anyone battling hay fever.

And relief from the itchy eyes and runny nose misery may not be too far away. Introduced to the 20-acre site in the spring the two colonies are now happily settled with the first signs of honey production well underway.

Estates Manager Donna Bowles is delighted

*Continued...*





that the bees are thriving at Howbery Business Park and that they may help the two-legged visitors and residents thrive too. She commented;

"Initially the bee hives were introduced to make the most of our landscape, improve bio-diversity and provide an added interest for our tenants. I have to admit, the potential to alleviate the symptoms of hay fever wasn't our first thought but once we have honey production underway we will make samples available to local sufferers and hope they see some benefit."

The two hives, which were established with 5,000 bees and one Queen, are managed by 'Master of the Bees' Robin Sergi, landscape manager at Howbery Business Park. Robin said:

"The humble honey bee is a stunning example of nature at its best but unfortunately is under threat from a range of factors including loss of habitat.

"Howbery Business Park has invested in the flora and fauna of the site, recognising that the grounds are a key element that all our tenants enjoy. Over the years we have been able to develop diverse habitats ranging from the ornamental flowers through to wildflower meadows and some of the most impressive specimens of trees in the locality. Not only does this set us apart from the average business park, it also means we offer prime bee real estate.

"In 2013 a colony of rare Ivy Bees were discovered on the site and the success of this endangered species helped to encourage us to explore the potential for the hives we have now introduced."





# Seriously Scootering

The team at Seriously PR, based in The Stables have been getting active over the summer with the new addition of their Micro Scooters!

You may have spotted them freewheeling their way over for lunch or delivering treats to the offices on the park.

We're assured they've passed their scooter proficiency tests!



## Crowmarsh Youth Football Team tournament winners



**Howbery Business Park sponsor Crowmarsh Youth Football Team.**

They got to the semi-finals at their first 6 a side Tournament in June which was good and bad as it did guarantee that one team made the final which they won after a penalty shoot-out.



# Regeneration at Howbery Business Park

**Regeneration is more commonly associated with old industrial or brownfield sites, yet amidst the lush Oxfordshire countryside Howbery Business Park is currently undertaking its own form of regeneration, transforming a run-down gate house into a 863 sq. ft. state of the art office space.**

The Lodge, which was formerly residential accommodation, had been empty for some time when Howbery Business Park received an enquiry from a firm keen to move to the site. With demand high and no suitable space available Estates Manager, Donna Bowles, has hit upon the idea of regenerating The Lodge.

Architecture and Interior Design Practice Starbuck & James, already tenants of Howbery Business Park, have been appointed to reconfigure the space and manage all planning approvals including the change of use from residential to commercial. With work already underway the space is rapidly transforming from a pokey gate house to a light, bright and airy office.

*Continued...*







*Donna Bowles and Oliver Margison*

Oliver Margison, Director at Starbuck & James who has been responsible for the process, comments;

“We were delighted to manage the work at The Lodge, not only as a pleasant departure from our usual work on private residential projects but also because as keen converts to the joy of working at Howbery, it meant we had an active role in the regeneration of a small corner of the Business Park.

“The property is within the curtilage of the Grade II listed Manor House so we have been sensitive and respectful of this in our plans, while ensuring that the layout provides a pleasant working environment. It’s great to see the work coming together and look forward to the meeting the new tenants as they breath new life into the space.”

Once complete the refurbished The Lodge will become the global headquarters for KKDC Design House, the global product design and

marketing team for KKDC, an international architectural lighting manufacturer specialising in LED.

Donna Bowles, Estate Manager, Howbery Business Park, said: “The development of The Lodge is the latest project in the Park’s evolution. Providing work space for companies of varying sizes in a pleasant and sustainable environment is what we do best, and we are delighted to be able to regenerate the space to enable another organisation to enjoy these benefits.”



*The Gatehouse and Lodge 1958*



# News from HR Wallingford

**September was a busy month for visitors to the park for HR Wallingford.**

**The engineering and hydraulics research organisation hosted an international conference in Oxford in September for scientists and engineers from around the world to share the latest research on the challenges related to the prevention of scour and erosion. This is important to investigate because of the damage these cause to structures such as bridges, dams, offshore structures and cables laid on sea beds.**

Part of the conference programme included a site visit to HR Wallingford where a group of 75 international delegates visited the company's physical modelling facilities and Ship Simulation Centre. They also watched a

demonstration on the river of one of the company's products, a remote control survey boat, known as an ARC boat.



*Watching a demonstration of HR Wallingford's remote control survey boat in action on the river*

Meanwhile, the Fast Flow Facility at HR Wallingford received local, national and international media attention as it unveiled its latest, and most realistic yet, Tsunami Simulator. The facility is being used by Professor Tiziana Rossetto's team of researchers from UCL EPICentre (University College London) to create tsunami waves to test coastal defences and buildings for their tsunami resilience. The aim is to improve engineering guidance, and so help protect coastal communities worldwide. The latest to film the Tsunami Simulator were Discovery Channel Canada for their science programme, "Daily Planet".



*HR Wallingford's 3rd generation Tsunami Simulator has been set up to test buildings for their tsunami resilience*



*Delegates from the ICSE 2016 conference visited HR Wallingford for a Technical Site Visit*



# Dedicated conference, meeting and event venue, in inspiring surroundings

**Don't forget all the fabulous rooms available to hire on the park.**

The historic Manor House offers four distinguished conference and meeting rooms that surround a magnificent marbled foyer to welcome your visitors. The adjacent Fountain Conference Centre offers a more contemporary space for those larger events and includes disabled access and facilities.

We offer a superb choice of hospitality, meeting and training facilities in the heart of the Thames Valley, with the space to accommodate meetings, conferences and other events with up to 80 people. Each of the rooms can be dressed to meet your requirements and layouts changed to suit you, with the most common being classroom, theatre, closed/open board, informal and u-shaped.

Our smaller rooms can accommodate meetings and conferences of between 10 and 40 people. Choose from the Wynn Room, du Cros Room, de Morney Room or Blackstone Room.

Our Fountain Conference Centre can accommodate larger meetings and conferences with between 25 and 80 people depending on layout.

See the Conferences and Meeting Rooms section on our website to find out more about each of the rooms or download our "Conferences and Meetings" brochure.

To discuss rates or to make a booking, please contact Donna Bowles:  
**[d.bowles@howberypark.com](mailto:d.bowles@howberypark.com)**







# More to look forward to from Style Acre

## #GivingTuesday – 29th November

This is a national initiative devoted to doing good stuff. After the frenzy of Black Friday and Cyber Monday, #GivingTuesday is an opportunity to rebalance your Karma! Come along to the Manor for Tuesday Treats – a slice of homemade cake, with the satisfaction that your donation will be supporting our work.

## The Wallingford Santa Dash – Sunday 4th December, Wallingford

Run as Santa in this festive family fun run through the local parks of Wallingford, arriving in time for the opening of the towns Christmas Extravaganza!

For more information and to sign-up ahead of ticket release contact Chris at [cburrows@styleacre.org.uk](mailto:cburrows@styleacre.org.uk)

Based on the park, Oxfordshire charity Style Acre enhances the lives of people with learning disabilities through activities, work development, day opportunities, and supports people living in their own homes. We have some exciting local events coming up:

## Christmas at the Manor – Friday 9th December

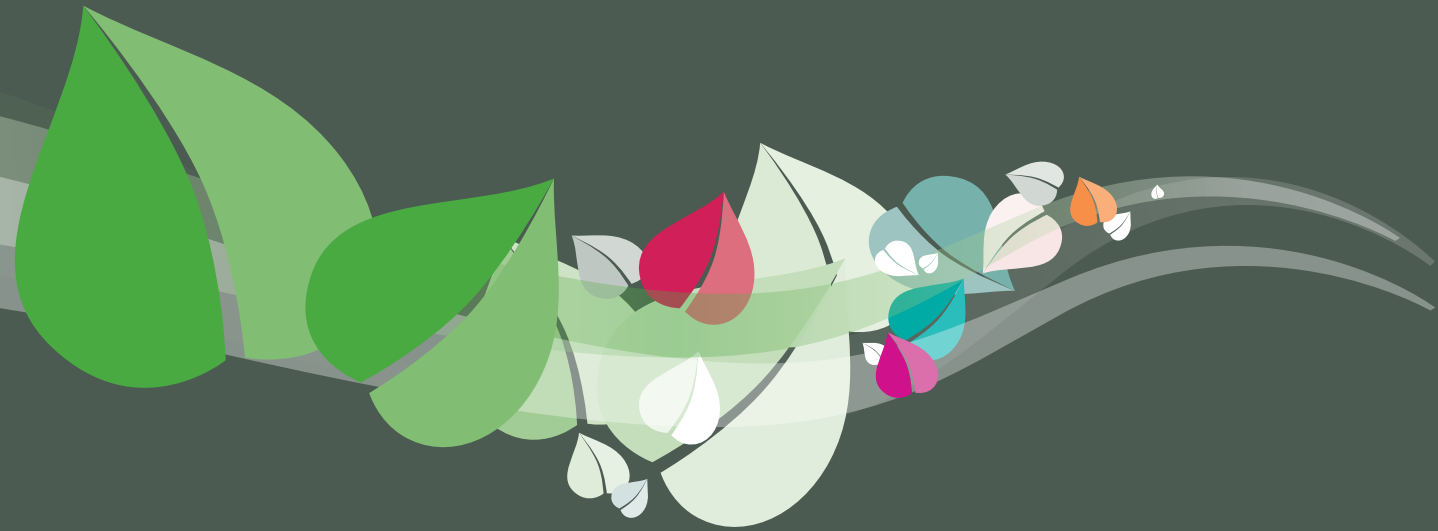
Join us for our annual lunchtime Christmas carol gathering and craft fair where you can pick up some fantastic Christmas gifts and goodies.

Resident pop-up band, The Howberries, shall be performing for this special event and they are looking for new band members. If you play an instrument and would like to be involved, contact Chris on the details below.

We are also looking for stallholders who might be interested in join our Christmas Fair. If you or anyone you know, might like a stand at our event, please get in touch.

For more information regarding joining the band or having a stall at our event contact Chris at [cburrows@styleacre.org.uk](mailto:cburrows@styleacre.org.uk)





# News... News... News

## A Note From The Editor:



Keep us posted – to include your news and stories in Parklife, please email them to me, Donna Bowles [d.bowles@howberypark.com](mailto:d.bowles@howberypark.com)

Deadline for the next edition January 14, 2017.

Designed and produced by The Imageworks  
[www.imageworks.co.uk](http://www.imageworks.co.uk)

*Howbery*   
BUSINESS PARK - WALLINGFORD